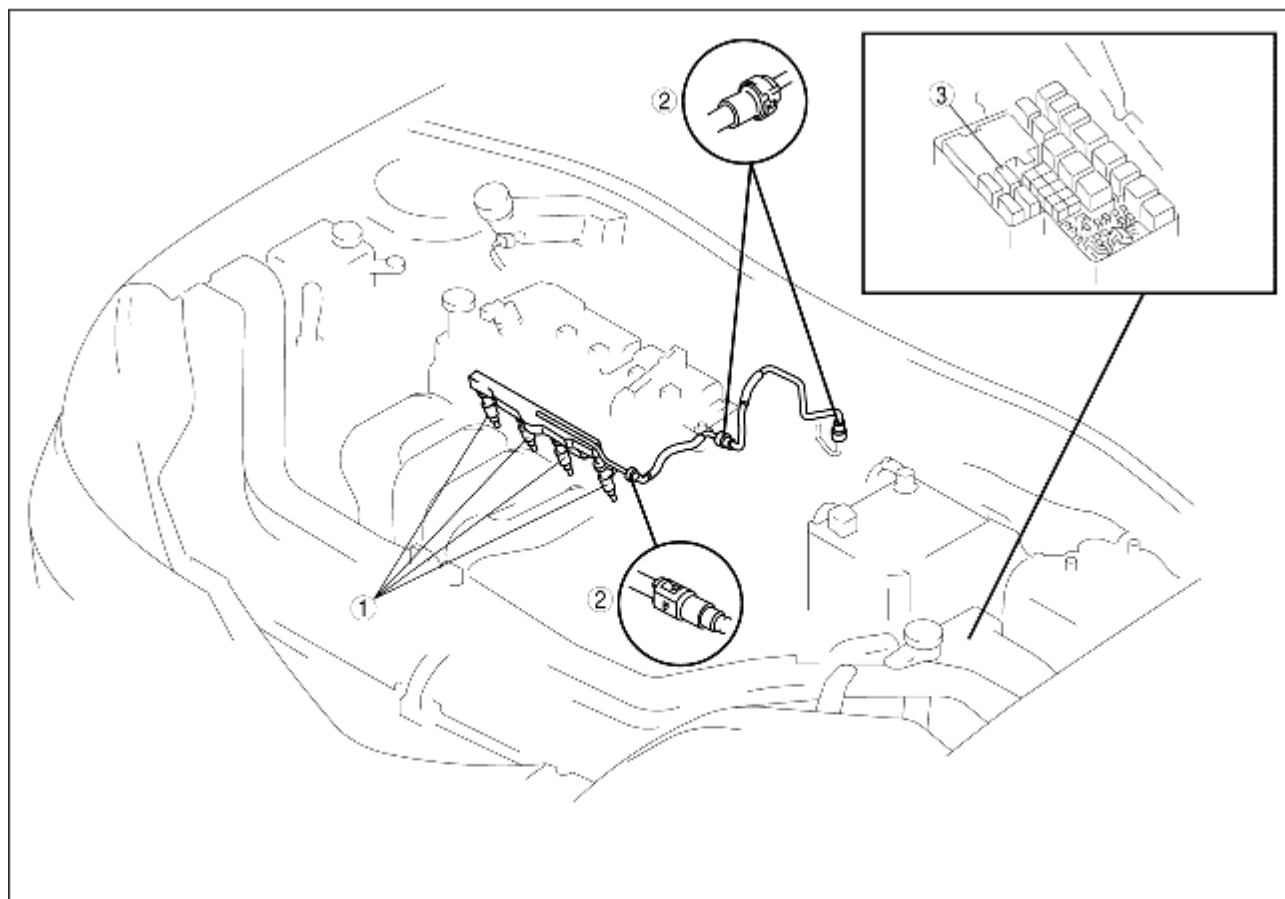


## FUEL SYSTEM LOCATION INDEX [ZJ, Z6, LF]

B3E011401006W01

### Engine Compartment Side

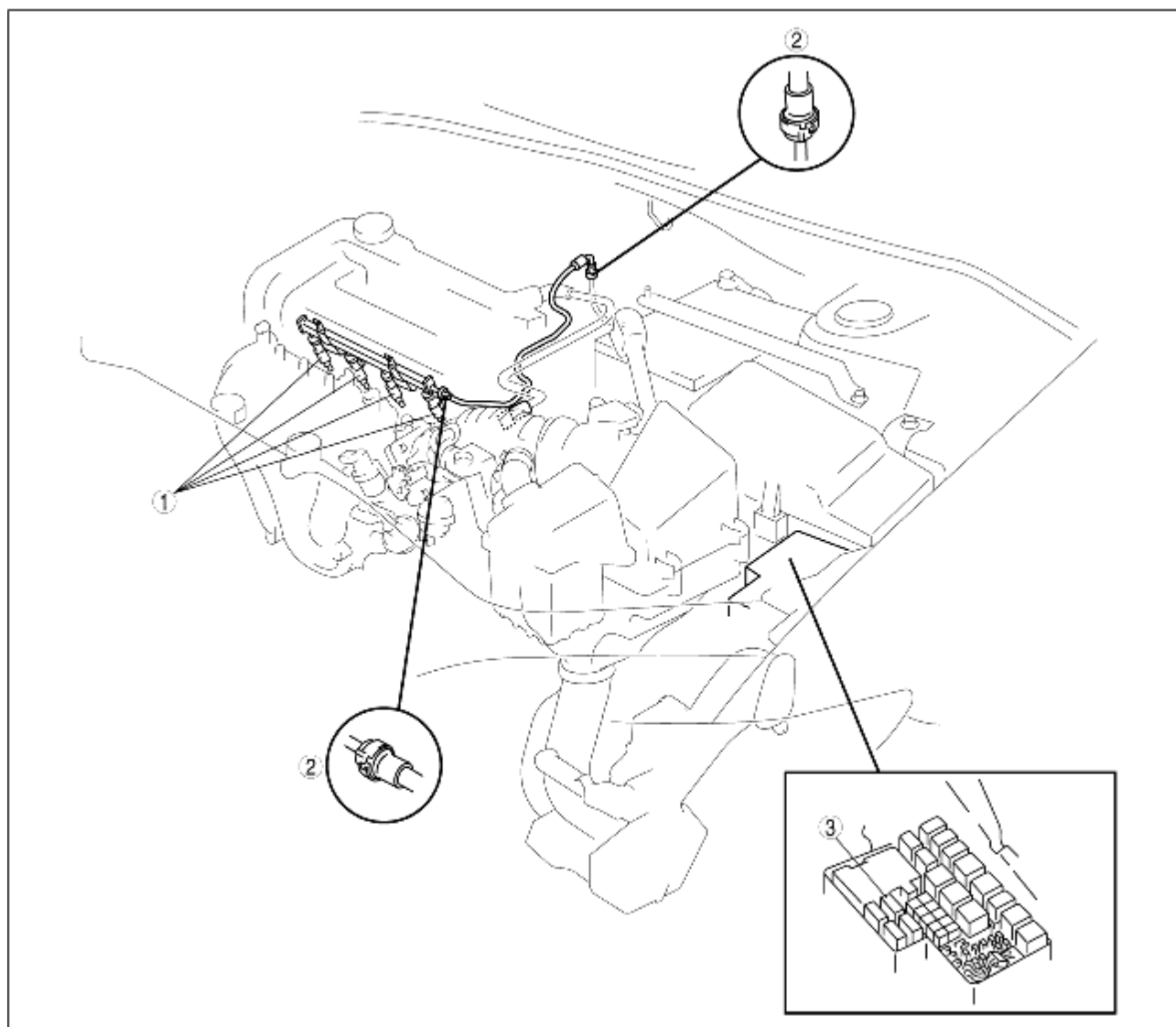
ZJ, Z6



B3E0114W002

1	Fuel injector (See <a href="#">FUEL INJECTOR REMOVAL/INSTALLATION [ZJ, Z6].</a> ) (See <a href="#">FUEL INJECTOR INSPECTION [ZJ, Z6, LF].</a> )
2	Quick release connector (See <a href="#">QUICK RELEASE CONNECTOR REMOVAL/INSTALLATION [ZJ, Z6, LF].</a> )
3	Fuel pump relay

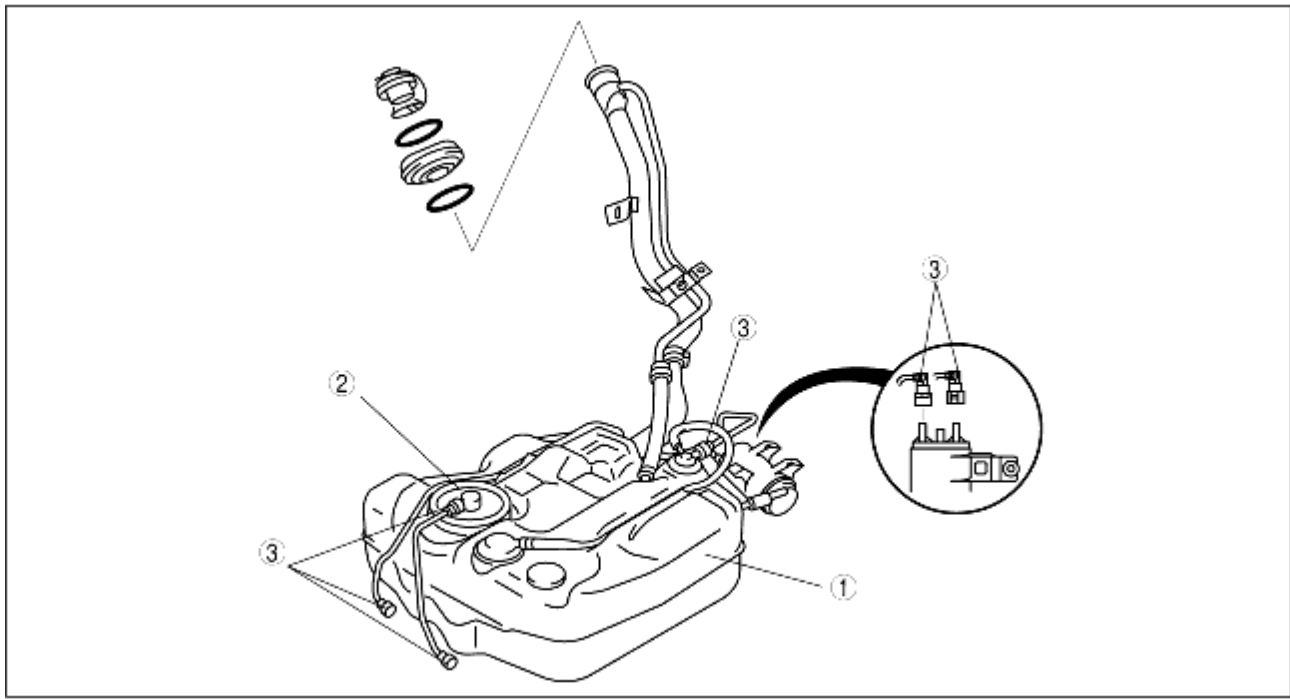
LF



B3E0114W001

1	Fuel injector (See <a href="#">FUEL INJECTOR REMOVAL/INSTALLATION [LF].</a> ) (See <a href="#">FUEL INJECTOR INSPECTION [ZJ, Z6, LF].</a> )
2	Quick release connector (See <a href="#">QUICK RELEASE CONNECTOR REMOVAL/INSTALLATION [ZJ, Z6, LF].</a> )
3	Fuel pump relay

## Fuel Tank Side



B3E0114T003

1	Fuel tank (See <a href="#">FUEL TANK REMOVAL/INSTALLATION [ZJ, Z6, LF].</a> ) (See <a href="#">FUEL TANK INSPECTION [ZJ, Z6, LF].</a> )
2	Fuel pump unit (See <a href="#">FUEL PUMP UNIT REMOVAL/INSTALLATION [ZJ, Z6, LF].</a> ) (See <a href="#">FUEL PUMP UNIT DISASSEMBLY/ASSEMBLY [ZJ, Z6, LF].</a> ) (See <a href="#">FUEL PUMP UNIT INSPECTION [ZJ, Z6, LF].</a> )
3	Quick release connector (See <a href="#">QUICK RELEASE CONNECTOR REMOVAL/INSTALLATION [ZJ, Z6, LF].</a> )